



875 Bassett Road  
Westlake | Ohio | 44145 | USA  
(800) 817-7849  
WesternEnterprises.com  
Meriam.com

Manufacturer of innovative compressed gas fittings,  
regulators & measurement tools.

# Installation Instructions

## for meriSuite **CG**

We offer two options to download the meriSuite CG Software

### ***Outline of the steps to install meriSuite CG.zip file page 3***

1. Read these Installation Instructions first.
1. Check your version of Microsoft Windows.
2. Download and install the meriSuite CG application.
3. Install the USB Driver.

### ***Outline of the steps to install meriSuite CG .exe file page 6***

1. Read these Installation Instructions first.
2. Check your version of Microsoft Windows.
3. Download and install the meriSuite CG application.
4. Install the USB Driver.

### ***Check your version of Microsoft Windows***

The meriSuite CG app is compatible with these versions of Windows.

- Windows 10
- Windows 8 (8.1)
- Windows 7, Service Pack 1

# General information

## *Notification Statements*

### **Disclaimer**

Every precaution has been taken in the preparation of this manual. Nevertheless, Meriam® assumes no responsibility for errors or omissions or any damages resulting from the use of the information contained in this publication, including, without limitation, incidental, special, direct or consequential damages. MERIAM® MAKES NO REPRESENTATIONS OR WARRANTIES WITH RESPECT TO THE ACCURACY OR COMPLETENESS OF THE CONTENTS HEREOF AND SPECIFICALLY DISCLAIMS ANY IMPLIED WARRANTIES OF MERCHANTABILITY OR FITNESS FOR ANY PARTICULAR PURPOSE. Meriam® reserves the right to revise this publication and to make changes from time to time in the content hereof without obligation to notify any person of such revision or changes.

In no event shall Meriam® be liable for any indirect, special, incidental, consequential, or punitive damages or for any lost profits arising out of or relating to any services provided by Meriam® or its affiliates.

It is not possible for Meriam® to identify all foreseeable uses or misuses, therefore all persons involved in commissioning, using, or maintaining this product must satisfy their self that each intended application is acceptable.

### **Copyright**

This publication is proprietary to Meriam® and no ownership rights are transferred. Neither this manual, nor any of the material contained herein, may be reproduced without the prior written consent of Meriam®.

### **Trademark information**

All other trademarks are the property of their respective owners.

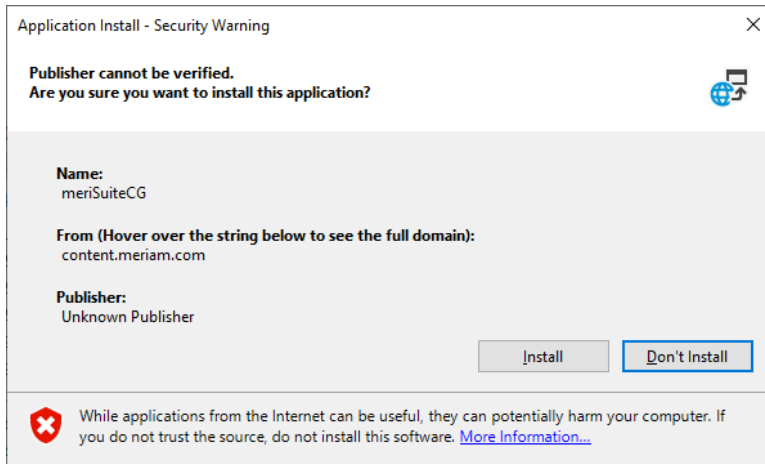
## Download and install meriSuite CG setup(.zip )

<https://content.meriam.com/install/meriSuiteCGZip/MeriSuiteCG.zip>

**Note:** Different browsers notify you in different ways when a file has downloaded and where to open it.

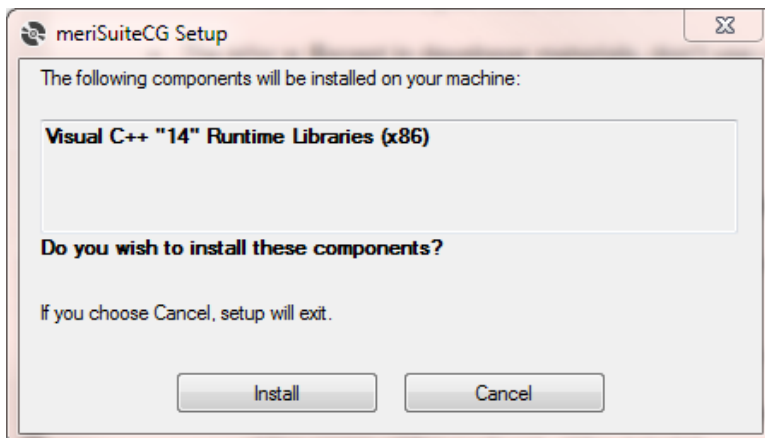
1. Move your zip file into a preferred location, then right click on the zip file and select "Extract All" or "Extract Here". From the extracted zip, run meriSuite CG application.

**Note:** Some of you may see the full file name **setup.zip**.

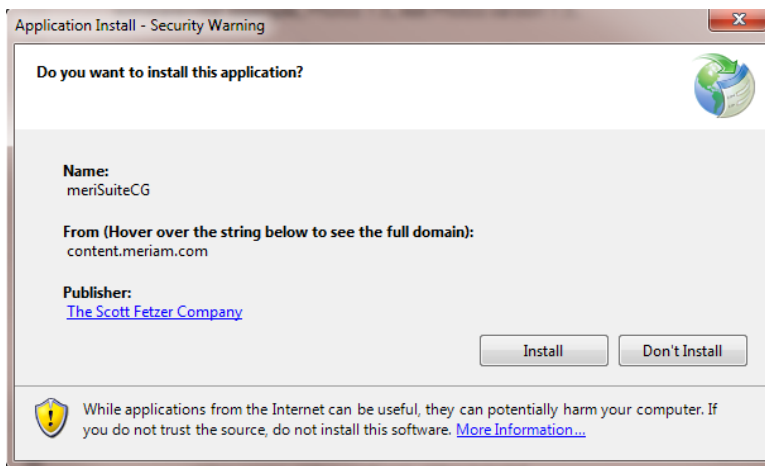


2. After you click **Run**, the meriSuite CG Setup dialog box appears, click **Install**.

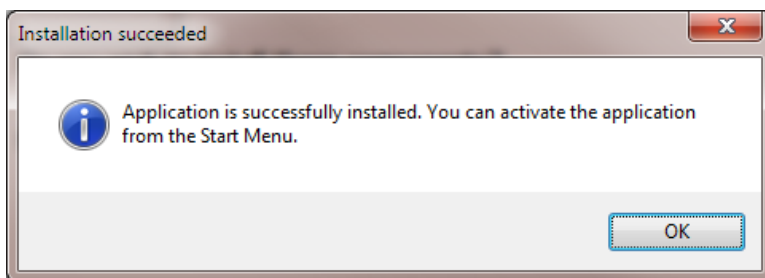
**Note:** Your computer will only display "(x86)" if you have a 32-bit system.



3. Click **Install** again.



4. Click **OK**.



## ***Windows 10 requires a few more steps***



1. Select the **Start** button on the taskbar.
2. Scroll through the list of apps to find **meriSuite CG** and right-click the **meriSuite CG** app.
3. Click **More**.
4. Select **Run as administrator**.

## ***Install the USB Driver***

1. Read the [USB Drivers Installation Instructions 9R607](#) on the [Downloads](#) page on [www.meriam.com](http://www.meriam.com).
1. The instructions have links that you can click to download the required USB Driver.
2. Follow the on-screen instructions.

## ***Congratulations. You are ready to use meriSuite CG.***

A shortcut for meriSuite CG appears on your desktop.



### ***Error message: meriSuite CG Setup***

If you see this message appear, follow the steps below:

*"An error occurred while installing system components for meriSuite CG. Setup cannot continue until all system components have been successfully installed."*

1. Uninstall the existing version of **Microsoft Visual C++ 2015 Redistributable (x86)**... on your computer. See the figure below.
3. Open the Windows' Control Panel to find and uninstall the current version of **Microsoft Visual C++ 2015**.
4. Close the error window and reopen the **setup** file.
- 5.

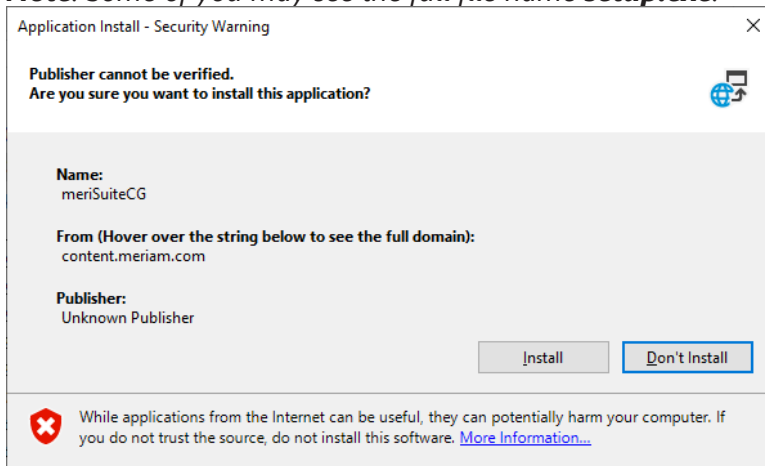
## Download and install meriSuite CG setup(.exe )

<http://content.meriam.com/install/meriSuiteCG/setup.exe>

**Note:** Different browsers notify you in different ways when a file has downloaded and where to open it.

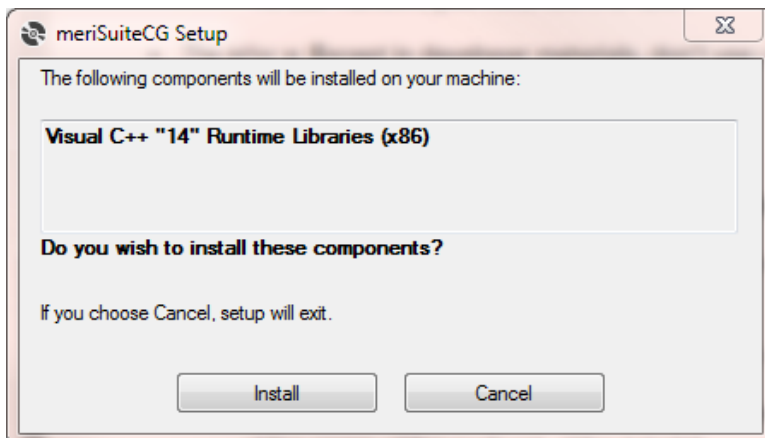
1. Open the **setup** file and the following dialog box appears. Click **Run**.

**Note:** Some of you may see the full file name **setup.exe**.

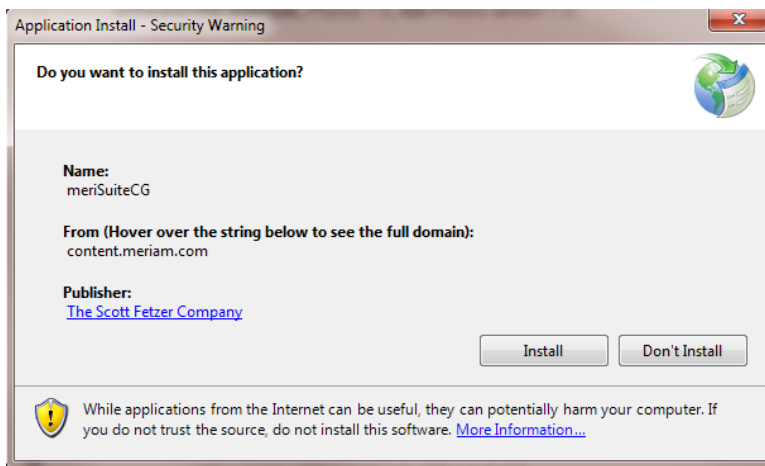


2. After you click **Run**, the meriSuite CG Setup dialog box appears, click **Install**.

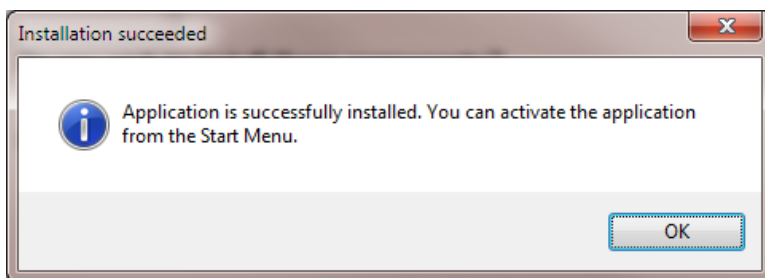
**Note:** Your computer will only display "(x86)" if you have a 32-bit system.



1. Click **Install** again.



2. Click **OK**.



## ***Windows 10 requires a few more steps***



1. Select the **Start** button on the taskbar.
2. Scroll through the list of apps to find **meriSuite CG** and right-click the **meriSuite CG** app.
3. Click **More**.
4. Select **Run as administrator**.

## ***Install the USB Driver***

1. Read the [USB Drivers Installation Instructions 9R607](#) on the [Downloads](#) page on [www.meriam.com](http://www.meriam.com).
1. The instructions have links that you can click to download the required USB Driver.
2. Follow the on-screen instructions.

## ***Congratulations. You are ready to use meriSuite CG.***

A shortcut for meriSuite CG appears on your desktop.



### ***Error message: meriSuite CG Setup***

If you see this message appear, follow the steps below:

*"An error occurred while installing system components for meriSuite CG. Setup cannot continue until all system components have been successfully installed."*

1. Uninstall the existing version of **Microsoft Visual C++ 2015 Redistributable (x86)**... on your computer. See the figure below.
3. Open the Windows' Control Panel to find and uninstall the current version of **Microsoft Visual C++ 2015**.
4. Close the error window and reopen the **setup** file.
- 5.



# Help

## ***Western Contact Information***

### **Address**

Meriam, a brand of Western Enterprises  
875 Bassett Road  
Westlake, Ohio 44145 USA

### **Telephone**

US customers (800) 817-7849  
International customers + 1 216 281 1100

### **E-mail addresses**

Return Material Authorization / Service & Repair Department  
[returnforms@westernenterprises.com](mailto:returnforms@westernenterprises.com)

Sales

[meriamsales@westernenterprises.com](mailto:meriamsales@westernenterprises.com)

### **Website**

[meriam.com](http://meriam.com)

### **Find a local Meriam representative**

Use this map to help you find a Meriam representative.

<http://www.meriam.com/representatives-map/>